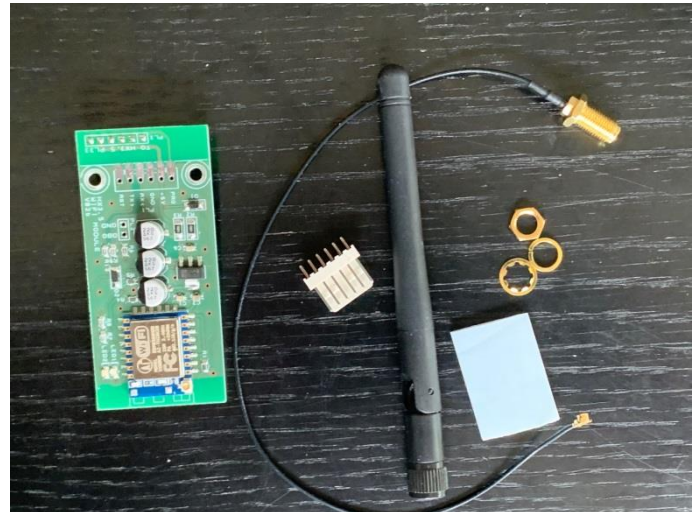


# Installing the HX3 WiFi Module into the HX3 MIDI Expander

The installation kit for self-installation includes

- HX3 WiFi module,
- Antenna socket with connection cable,
- screw-on, foldable WiFi antenna,
- 6-pin connector strip with reverse polarity protection, white,
- double-sided adhesive foam platelet.



Loosen the nuts on the 6.3mm sockets on the rear panel of the HX3 MIDI Expander.

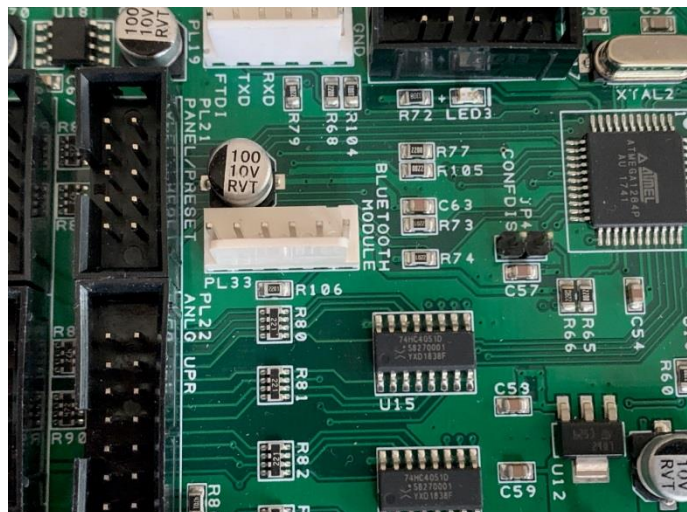
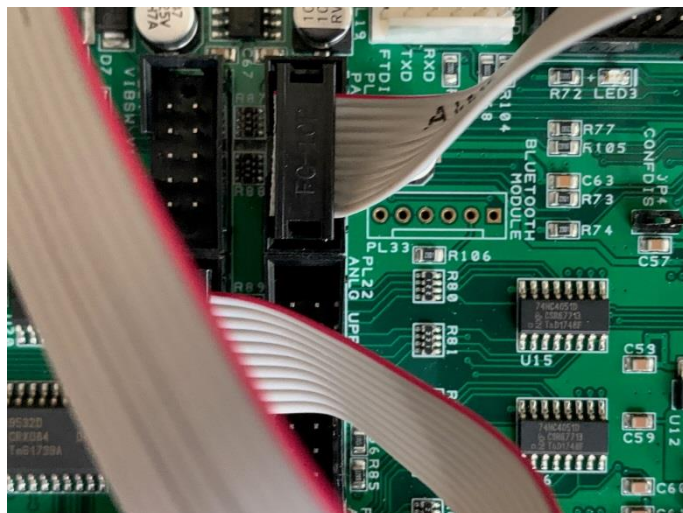
Unscrew the four Phillips screws on the rear panel and remove the rear panel.



Pull the cover plate out of the grooves in the side panels.



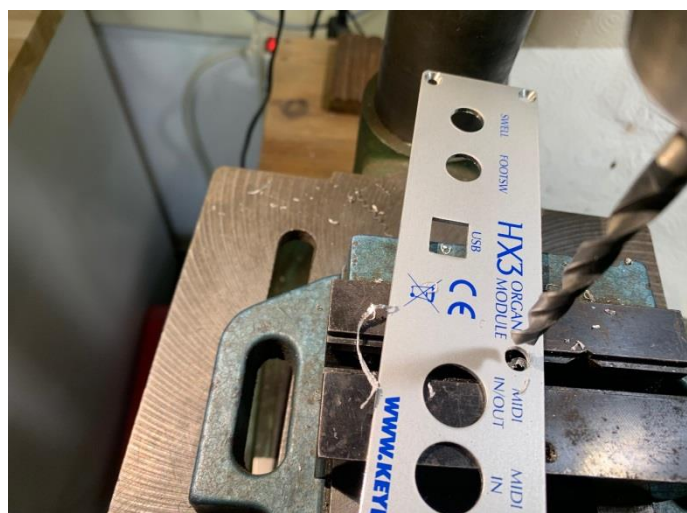
If the PL33 slot on the main board is empty, you will need to solder the supplied connector strip here. Disconnect the connection cable(s) to the menu panel from the main board and note the slots.



Solder the connector strip to PL33. The reverse polarity protection must point to the USB socket.

Now the main board is prepared. Plug the cable(s) to the menu panel back into their slots.

Mark the position of the drill hole for the antenna on the rear panel: 104mm from the left edge, 7.5mm from the upper edge.



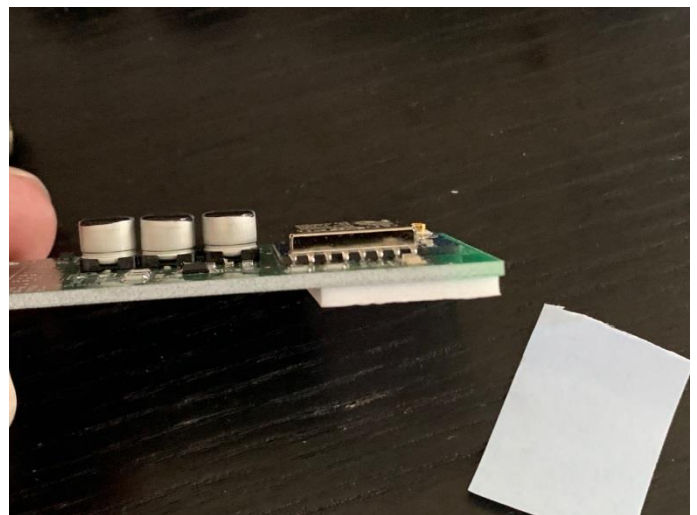
Center-punch the position and drill a hole with a diameter of 6.5mm.

Screw in the antenna socket.



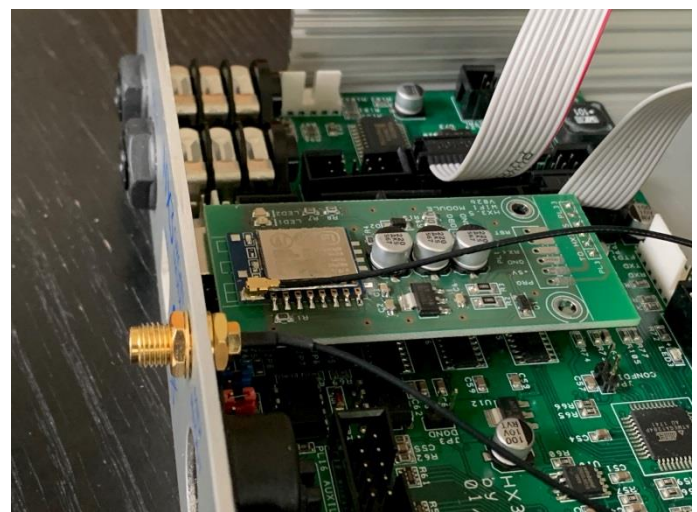
Insert the main board into the rear panel and tighten the nuts of the 6.3mm sockets.

Remove the blue protective foil from the foam platelet and attach it to the edge under the antenna socket on the back of the WiFi module.



Carefully press the plug of the antenna cable onto the antenna socket of the WiFi module until it clicks firmly into place.

Remove the second protective film from the foam platelet, insert the WiFi module into the PL33 slot and press it onto the USB socket on the other side.





Slide the cover plate back into the grooves in the side panels.

Push the main board carefully into the housing and tighten the Phillips screws again.



Screw the antenna onto the socket and point it upwards.



After switching on, the display now shows the IP address of the WiFi module 192.168.4.1.

The module is in access point mode when it is first switched on. This means that it forms its own wireless network called "HX3.5 TouchOSC" with the default password "password", to which you can connect directly with your mobile device or PC.

Establish the network connection and then start a web browser. Enter 192.168.4.1 as the URL. Now the HX3 WiFi configuration page appears. For more information, refer to the [HX3 TouchOSC User Manual](#).

## KEYBOARDPARTNER UG

Entwicklung elektronischer Musikinstrumente  
Carsten Meyer, Ithweg 37, D-30851 Langenhagen  
Web: [keyboardpartner.com](http://keyboardpartner.com) Email: [info@keyboardpartner.de](mailto:info@keyboardpartner.de)

All information given herein is given to describe certain components and shall not be considered as a guarantee of characteristics. Rights to technical changes reserved.